

Personal Safety

Diving should only be undertaken by trained and experienced divers

Beware of sudden changes in weather, especially when boating on open water

Beware of strong currents and undertows when snorkelling or at the beach

Wear shoes that grip well when walking on rock platforms

Watch where your hands are going at all times to avoid potentially dangerous creatures

Be aware of large unexpected waves when walking on shore, especially on rock platforms

Note: Point Danger Marine Sanctuary contains a 'sail powered vessels only' zone that is marked with signs. Swimming, surfing, diving or snorkelling in this area is dangerous.

Caring for the marine environment

Discarded gear and rubbish can endanger birds and marine animals – please take your rubbish home

Always replace any organisms or rocks you may have turned over

No Dogs are allowed in Point Danger Marine Sanctuary. Refer to the Shire Regulations for the surrounding beaches.

The intertidal zone in Victoria is protected – both inside and outside marine national parks and sanctuaries. Visit www.depi.vic.gov.au for more information.

See and leave our parks in safe hands, visit with a licensed tour operator. See www.parks.vic.gov.au for a list of operators who run activities in this park.

Victoria's unique coastline

The southern coastline of Australia has been isolated for millions of years from other continents due to ocean currents. This has resulted in our marine life evolving in many different ways. 90% of all marine life here is found nowhere else. Home to over 12,000 species of plants and animals, it is considered one of the most biodiverse and unique marine ecosystems in the world. For this reason, this significant marine environment is protected for the future.



Sea Lettuce

Protected network

Point Danger Marine Sanctuary is part of a system of 13 marine national parks and 11 marine sanctuaries in Victoria. By keeping these areas in a natural state we will protect this unique marine environment into the future.

The establishment of marine protected areas was based on scientific research. It followed ten years of community and industry consultation. An ongoing research and monitoring program forms part of Parks Victoria's management of these areas.

Victoria was the first jurisdiction in the world to create an entire system of fully protected marine national parks at the same time.

Parks Victoria is responsible for the day-to-day management of Victoria's marine national parks and marine sanctuaries.

Marine pests

Marine pests are non-native plants or animals that can have a detrimental impact on native marine ecosystems. They are a significant threat to the health of the marine environment. Marine pests can wipe out native species by preying upon or out-competing them.

Pests can arrive in new areas in a variety of ways, and preventing their spread is one way visitors can help protect the marine environment. Park users should wash down all equipment and dry it thoroughly before changing locations to minimise the risk of spreading these pests.

Please report any suspected marine pests to the Department of Environment and Primary Industries on 136 186. For more information on marine pests, visit www.depi.vic.gov.au/marinepests

Education and research

The network of marine national parks and sanctuaries provides excellent sites for research and education opportunities. All research must be approved before commencing. Schools, researchers and other groups visiting Point Danger Marine Sanctuary need to register their visit with local rangers on **13 1963**.

Restrictions

For the protection of the marine environment, a number of activities are prohibited within the boundaries of Victoria's marine national parks and marine sanctuaries.

Rangers and Fisheries Officers regularly patrol these areas and enforce regulations.



No fishing, netting, spearing, taking or killing of marine life. All methods of fishing, from the shore or at sea, are prohibited



No taking or damaging of animals, plants and objects (artefacts)

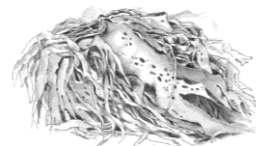
You are not permitted to carry a spear gun while snorkelling or scuba diving in Point Danger Marine Sanctuary.

You may carry fin-fish on board your boat within park boundaries if you caught the fish outside the parks, and you may also carry (but not use) a fishing rod. Spear guns are not permitted within any of Victoria's marine protected areas, either in a boat or elsewhere.

You may also have abalone or rock lobster and associated equipment (securely stowed) on board the boat provided you are travelling straight through the park by the shortest practicable route.

There are strong penalties under the National Parks Act for fishing in marine national parks and marine sanctuaries. Parks Victoria is serious about compliance. Offenders will be caught.

To report a fishing offence call the Department of Environment and Primary Industries on **13FISH** (133 474).



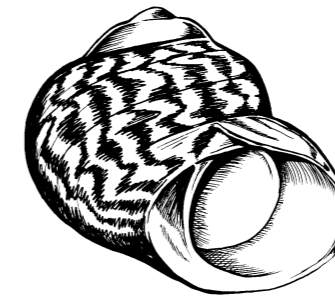
Bull Kelp

If you would like further information about Victoria's marine national parks and marine sanctuaries, contact the Parks Victoria Information Centre on **13 1963** or visit the Parks Victoria website at www.parks.vic.gov.au

Point Danger Marine Sanctuary



Point Danger Marine Sanctuary protects a shallow limestone reef nestled between two of Torquay's most popular beaches. Here a wide variety of marine creatures shelter amongst small boulders, seaweed beds, crevices and pools. Point Danger's plants, animals and landforms have been protected since 2002 to ensure the area can be enjoyed by present and future generations.



Warrener Snail
Turbo undulatus

Enjoying the park

Take in the Southern Ocean views, snorkel the reef, surf the waves or explore the rockpools when you visit. Adjacent to the park, Cosy Corner is a popular swimming spot for families during summer. Please take care when you visit to ensure these sections of our coast remain in a pristine and natural state.

Sea slugs

Point Danger Marine Sanctuary is known for its diversity of sea slugs known as *Opisthobranchs*. Unlike the garden slug, sea slugs can be a range of exquisite shapes, colours and sizes. Over 96 species have been recorded in Point Danger Marine Sanctuary alone. The abundance of these creatures highlights the health of this ecosystem. While sea slugs are common in the sanctuary, it takes a trained eye to spot them as some are only 1-2mm long.

Rockpools

Point Danger Marine Sanctuary provides wonderful opportunities for nature study on the rock platforms at low tide. The area is visited every year by many school and tour groups to learn about the diverse range of marine life, with many types of marine organisms to be discovered in the rockpools. Take care when you visit, the creatures living along our coast are sensitive and should be handled as little as possible.



Snorkelling and diving

Point Danger offers good diving and snorkelling when conditions are calm. SCUBA diving or snorkelling through the kelp forests of the outer reef may reveal schools of fish or rays patrolling.



Surfing and windsurfing

When the wind is howling through Torquay the sanctuary is often a hub for windsurfers, kite boarders and surfers making the most of the waves and currents that rip through the park. Torquay surf beach is a popular destination for surfers year round and is adjacent to the park.



Bird watching

At least 12 species of threatened birds have been sighted in the immediate surrounds of Point Danger; some of these birds are also protected under the Australian Migratory Bird Agreement with China (CAMBA) and Japan (JAMBA). Pacific Gulls, Pied Cormorants and Fairy Terns are regularly sighted. Visit www.birdlife.org.au to report a sighting and to learn more.



Coastal walking

Point Danger is one feature of the Surf Coast Walk that extends from Point Impossible to Fairhaven. The 35km trail continues south from the sanctuary towards Bells Beach – the eastern boundary of Point Addis Marine National Park. The walk traverses sandstone and limestone cliffs, sandy bays and includes sections of Great Otway National Park. See www.surfcoast.vic.gov.au for more information.

Caring for Country

Through their cultural traditions, Aboriginal people maintain their connection to their ancestral lands and waters. Parks Victoria recognises this connection and acknowledges the Traditional Owners and Aboriginal communities of these areas.

How to get there

Point Danger Marine Sanctuary is located between Torquay's surf and front beaches. Torquay is a popular coastal town at the start of the Great Ocean Road approximately 100km from Melbourne. Rockpools are often accessible at low tide via a sandy beach to the east or stairs leading down from the Memorial carpark.

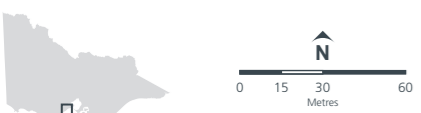
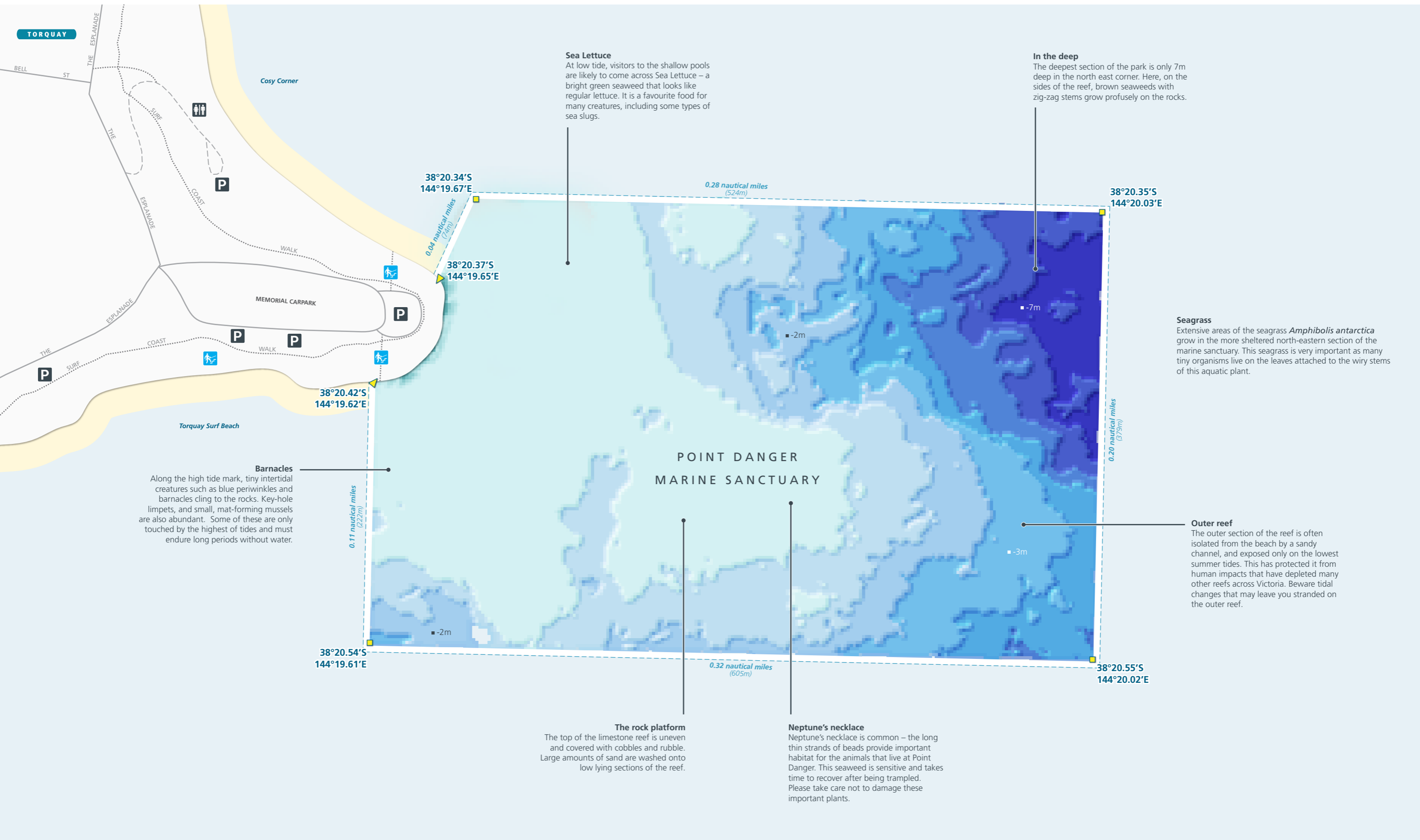
January 2013

Printed on Australian-made 100% recycled paper

parknotes



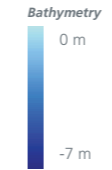
Point Danger Marine Sanctuary



Point Danger Marine Sanctuary boundary
Point Danger Marine Sanctuary encompasses the rock platform at the point and extends offshore for about 600m to the east and 400m to the south.

- No fishing
- No taking

- Parking
- Toilets
- Beach access
- Sealed road
- Unsealed road
- Walking track
- Onshore boundary marker
- Offshore boundary marker (unmarked in water)



www.parks.vic.gov.au
Latitude and Longitude values are based on WGS84. GPS users must note that coordinates for boundaries are given in the format degrees : minutes : decimal minutes. Alternate formats are available on Parkweb, by calling 13 1963, or from Parks Victoria offices.

Disclaimer: Parks Victoria does not guarantee that this data is without flaw of any kind and therefore disclaims all liability which may arise from you relying on this information.

Data source acknowledgements: State Digital Mapbase. The State of Victoria and Department of Sustainability and Environment.

Cartography by Parks Victoria January 2014
For mobile App search for Avenza PDF Maps