

SS COOGEE (1887-1928)

Dive Standard: Experienced

Dive Conditions

Diving on the *SS Coogee* is best done on a calm day as rough surface conditions can make boating or diver recovery difficult. Divers should avoid diving on this wreck when the Barwon river is in flood as visibility can be very poor.

Locating the Wreck of the *SS Coogee*

Launch Site: Queenscliff, Portsea or Sorrento.
Area: Two miles west of Port Phillip Heads in the Ships' Graveyard.

Chart No: AUS 143
Latitude: 38 18'12" S
Longitude: 144 35'0" E

Visual Transits

1. Looking towards Barwon Hoards train shaped bushes (stern marks).



2. Looking north, pine trees and hill look like cat's ears.



3. Looking north east to Point Nepean/Arthur's Seat.



Similar Wrecks in Victoria

Other wrecks of early steamships included in the Underwater Shipwreck Discovery Trail are the *SS Blackbird* (Port Albert), *SS Casino* (Apollo Bay) and the *SS Wauchope* (Port Phillip Bay).

Help Protect Our Maritime Heritage

Many wrecks are fragile and require constant monitoring. Divers visiting wreck sites can help the Maritime Archaeology Unit protect and manage Victoria's Historic Shipwrecks by:

- Reporting any damage to wreck sites caused by natural erosion or the activities of divers.
- Reporting artefacts which have become exposed through erosion and are at risk from being washed away or looting.
- Reporting any diver seen actively looting a wreck.
- Informing the Unit of a new wreck site. Divers who find and report a new wreck may be entitled to a reward.

Please contact the Maritime Archaeology Unit at:

Victoria Archaeological Survey
29-31 Victoria Avenue
Albert Park VIC 3206
Telephone: (03) 690 5322

A steamship used to transport cargo and passengers between Melbourne and Launceston and Melbourne and Geelong. From 1917 it was used as a mine sweeper and to repair damage to the Bass Strait cable.

Diving on the Wreck of the *SS Coogee*

The *SS Coogee* lies in 33 metres of water, approximately four kilometres offshore between Point Lonsdale and Barwon Heads.

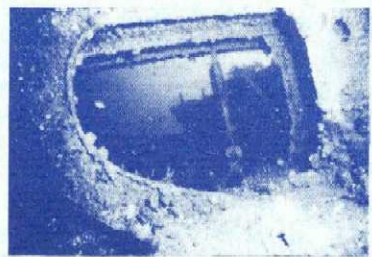
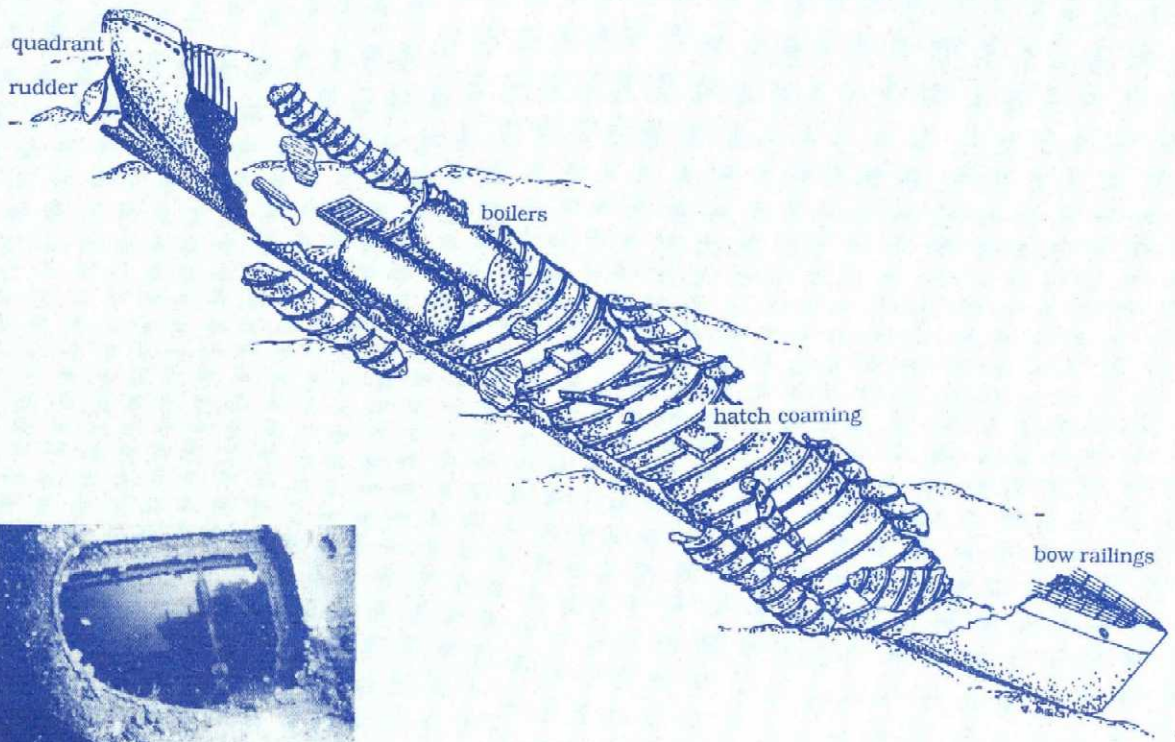
The vessel lies with its bow toward shore (facing north) on a flat limestone/sand seabed. The bow rests on the sand at 33 metres and the stern is at 35 metres depth. The bow and stern are the most complete structures of the wreck as most of the midships section is flattened or missing - most likely due to the use of explosives to scuttle the vessel.

At the bow, divers can see some of the original ship railings. At the stern, the rudder and rudder quadrant (used to steer the rudder) are still in position. In this area, divers will also be able to see the remains of the two decks.

The *SS Coogee*'s engine was removed prior to the steamship being scuttled, however the engine bed and intact boilers can be seen amidships. Hatches can be seen in the middle of the ship on the centre line.

The overall length of the wreck is approximately 220 feet (67m).

SS COOGEE (1887-1928)



A view through the deck of the SS Coogee, looking towards the stern.