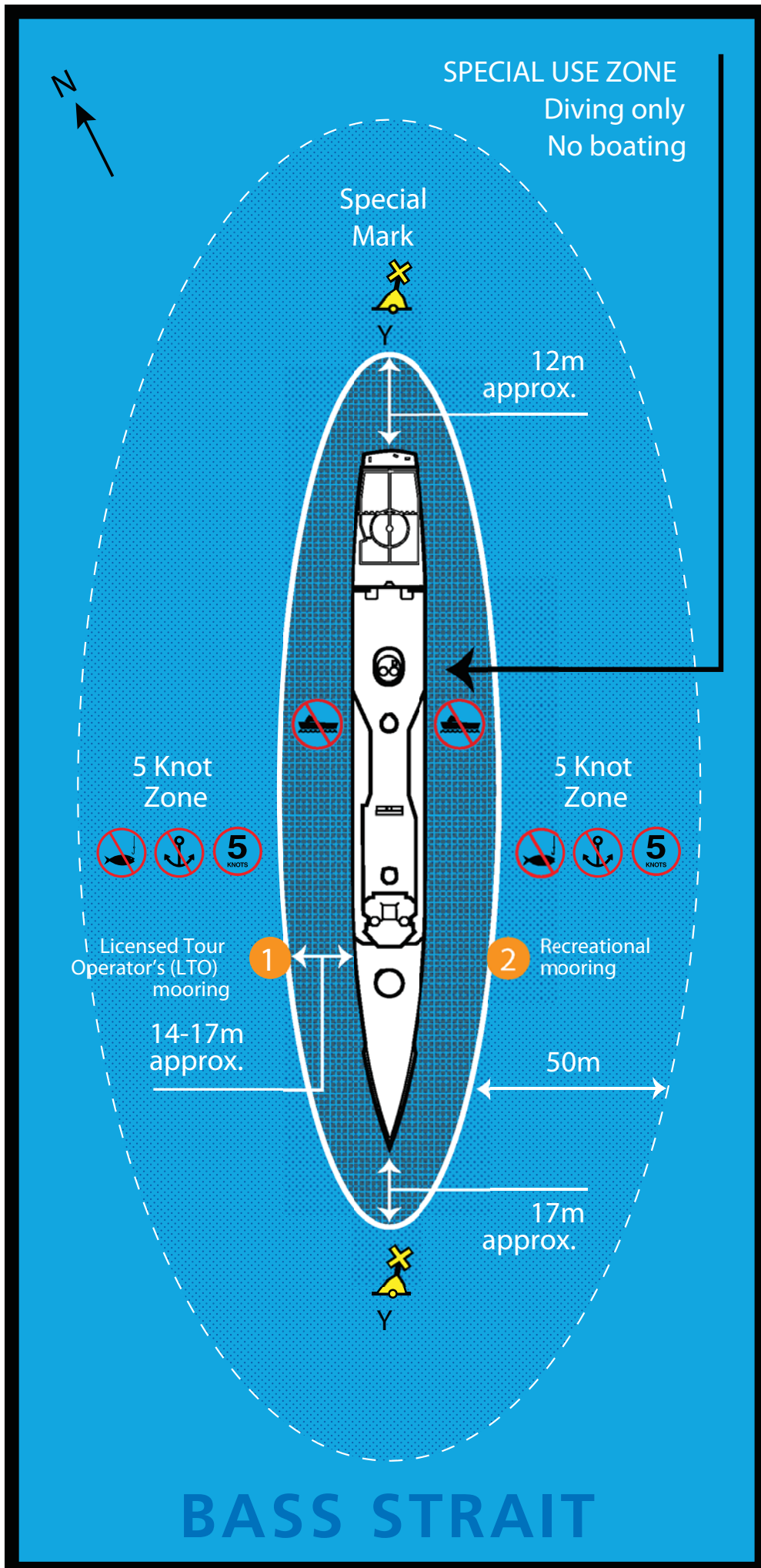


ex-HMAS Canberra Dive Site Mooring

Latitude:
38° 17.953' S

Longitude:
144° 32.627' E

Datum:
WGS84



Map © Copyright Parks Victoria 2014.

This is NOT a navigation chart. This map is provided as a guide only and is not intended for navigational use. For navigation of Port Phillip, Chart AUS 143 should be consulted. Notice to mariners are issued by Parks Victoria and published on www.parkweb.vic.gov.au

26 May 2014